

EcoMarble: The Light Revolution

Redefining Natural Stone through Composite
Technology & Automated Manufacturing.

NATURAL AESTHETICS. RE-ENGINEERED PHYSICS.

The Burden of Traditional Luxury



The Weight: 50kg/m².
Requires heavy machinery
and OHS risk management.



The Fragility: High
breakage rates during 'The
Fragile Cargo' transport.

**Traditional Stone = 50kg/m²
+ Heavy Duty Anchors**

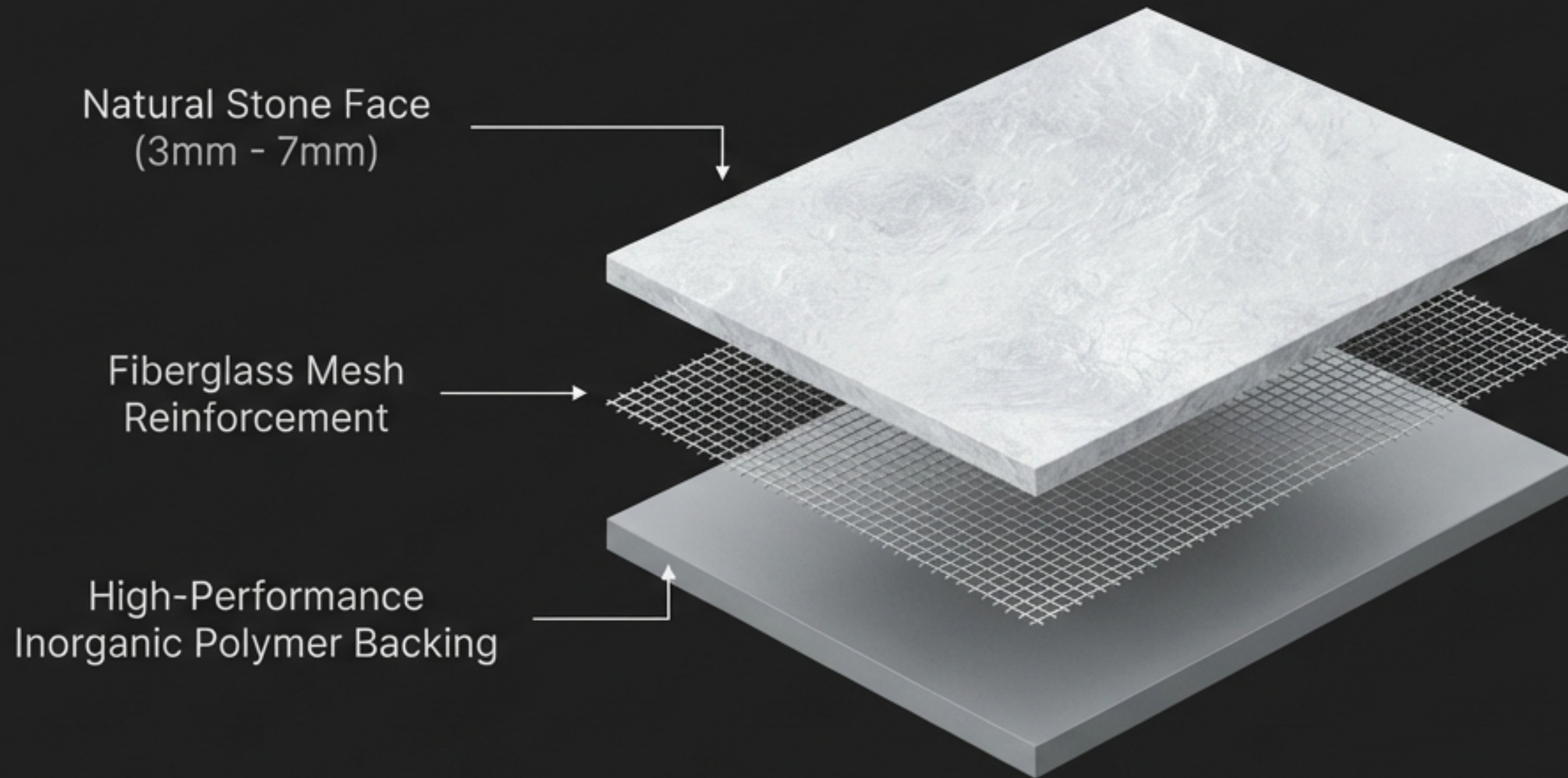


The Pathology: Porous nature
leads to Efflorescence
(white bloom) and rust spots.



The Waste: Subtractive cutting
turns precious resource into
sludge.

Natural Surface, Re-engineered Core



Key Insight

- Chemistry: Inorganic, cement-compatible backing. Forms a permanent waterproof barrier.
- Physics: Impact resistance >20J. Hail and collision proof.

Not Porcelain. Not Quartz. Reinforced Natural Stone.

The Wire Saw Revolution

From 'Subtractive Manufacturing' to 'Precision Yield'.



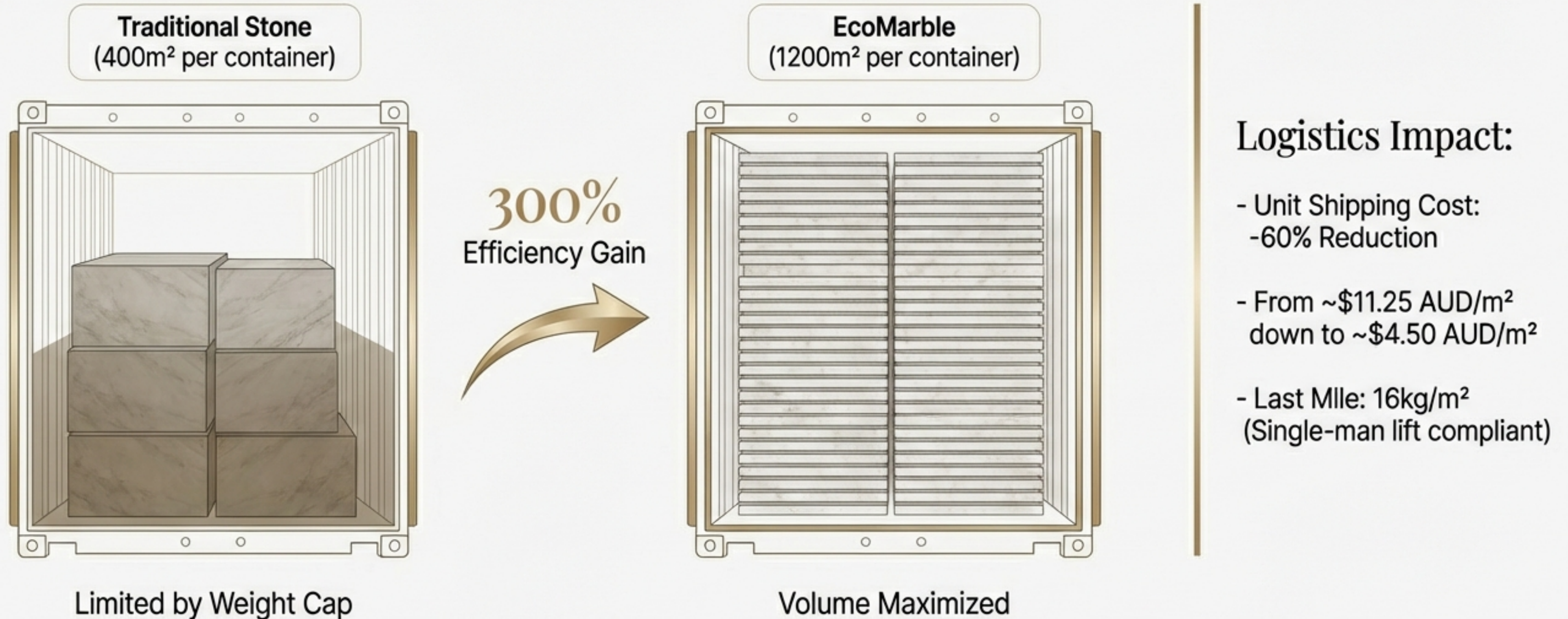
+30%
Raw Block Yield Utilization

20%
Of Traditional Energy Consumption

95%
Reduction in Waste & Pollution

Turning Heavy Cargo into Light Logistics

In export markets like Australia, weight is the limiting factor. We change the model.



The 'Zero Demolition' Renovation



3. EcoMarble Veneer

Total Thickness Increase: ~10mm.
No demolition noise.
No debris.
No downtime.

2. Hybrid Mastic Adhesive
(>2MPa Bond)

1. Existing Substrate
(Wood, Glass, Old Tile)

Defying Gravity: Furniture & Ceilings



Translucent options available (Backlit capable).

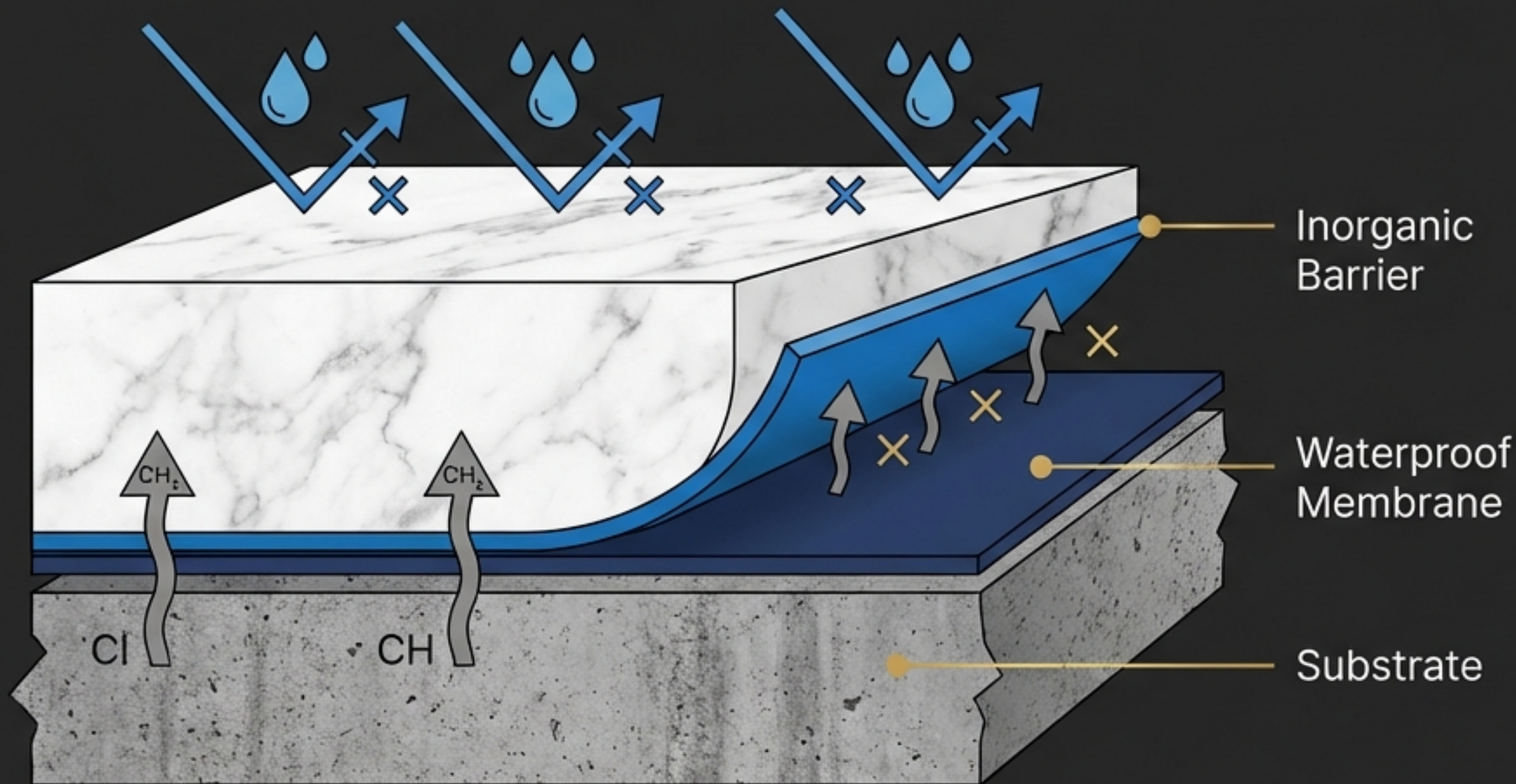
1.5mm Ultra-Thin Series.
Prevents hinge failure.

The 1.5mm Spec:

- 1mm Natural Stone Face
- 0.5mm Backing
- Safe for Ceilings & Curved Surfaces

The Wet Area Solution: Banishing Pathology

Waterproof. Alkali-proof. Zero Efflorescence.



CRITICAL SPECIFICATION:

DO NOT USE 1.5mm in Wet Areas.

MUST USE 7mm or 9mm specifications.

Result: Zero rust spots, zero mold feed, zero white bloom.

Exterior Facades & Fire Safety

Replacing flammable Aluminum Composite Panels (ACP) with non-combustible natural stone.



AS 1530.1 Compliant.
Non-combustible
Inorganic Hybrid
Cement Backing.



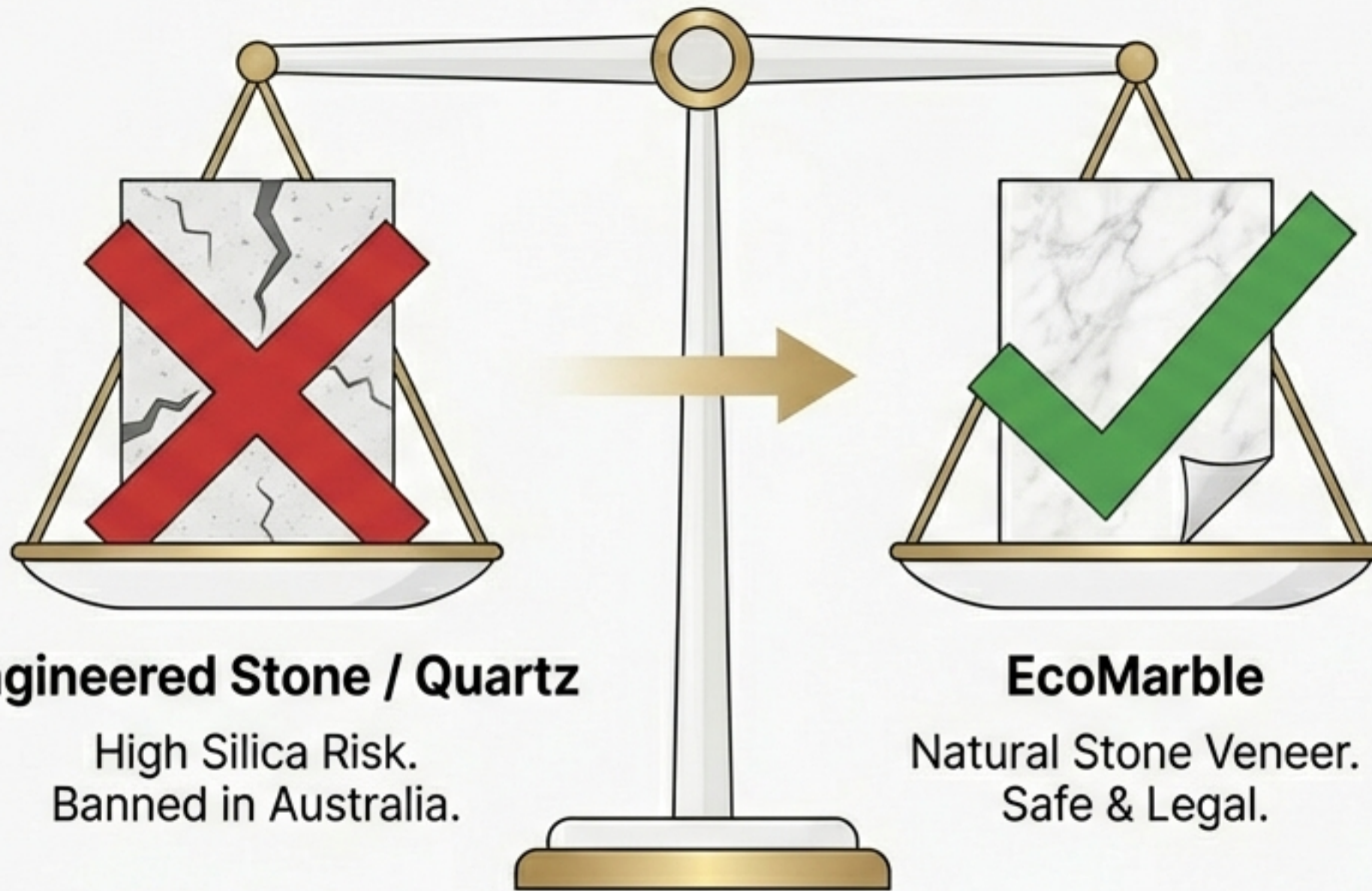
Impact Resistance >20J.
Hail & Collision Proof.



Lightweight Structure.
~16-20kg/m² reduces
structural load.

Navigating the 2024 Regulatory Landscape

The Natural Alternative to the Engineered Stone Ban.



Engineered Stone / Quartz

High Silica Risk.
Banned in Australia.

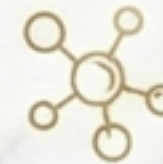
EcoMarble

Natural Stone Veneer.
Safe & Legal.

Action Plan



1. **Material Classification:**
HS Code 6802 (Natural Stone).



2. **Composition:**
Calcium Carbonate Face +
Cementitious Backing
(No Resin Binding).



3. **Certification:**
NATA Laboratory certified
'No Resin' backing.

The Economics of Total Installed Cost (TIC)

\$600 - \$1,500+
AUD/m²

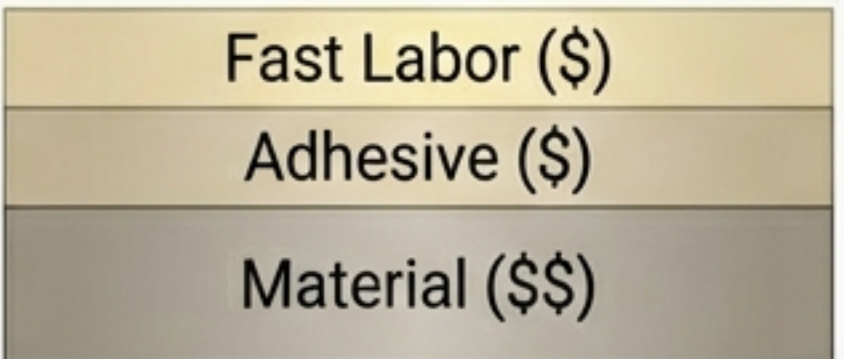


Traditional Marble



30% - 60%
Overall Savings

\$200 - \$300
AUD/m²



EcoMarble

Eliminates heavy steel sub-frames and demolition costs.

Installation Technology



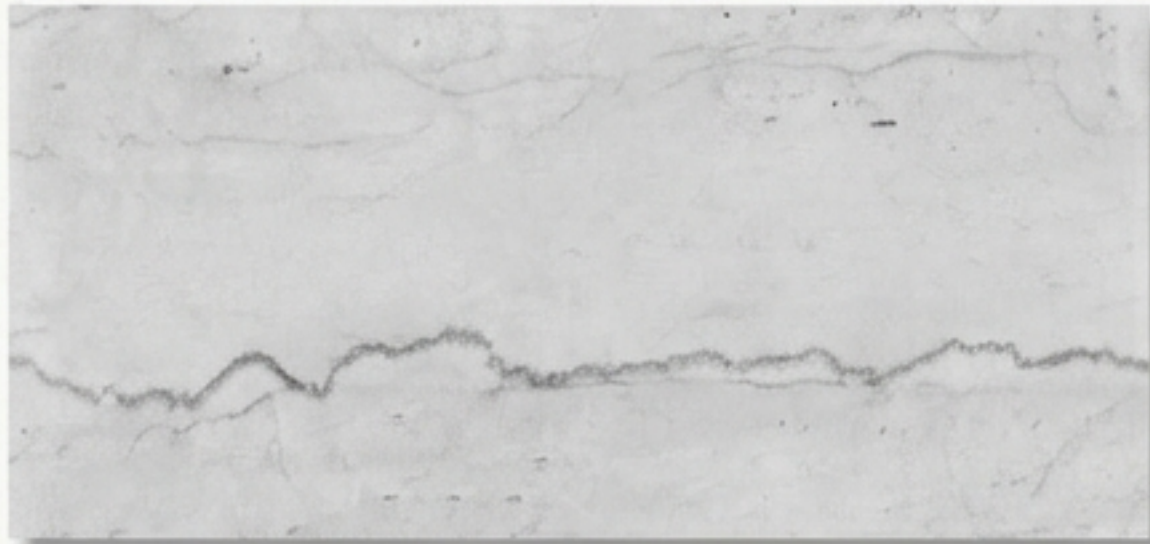
Simplified 'Tile-level' installation.

Adhesion: >2MPa bond strength.

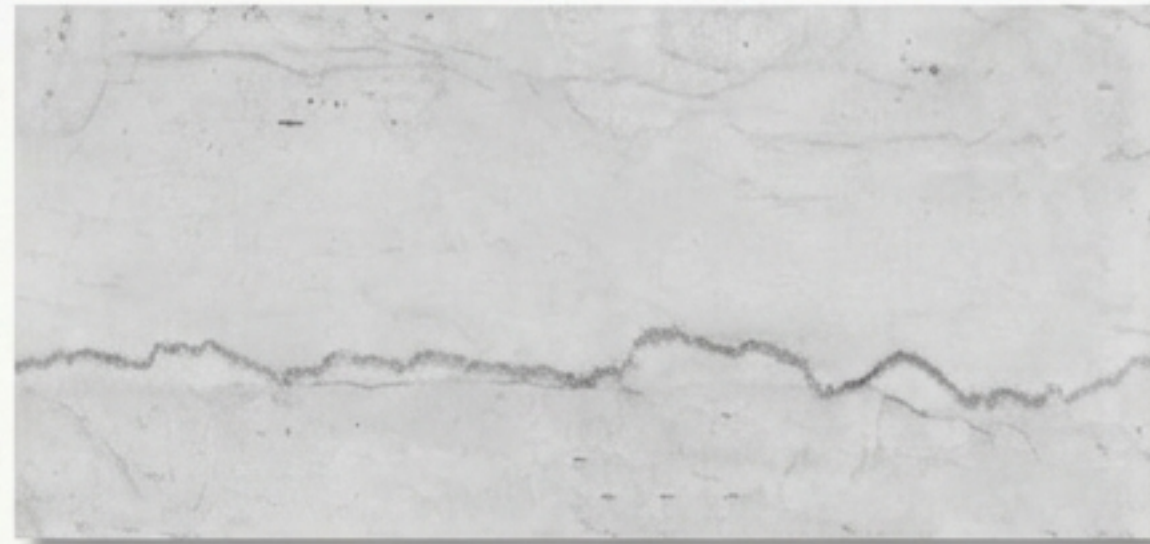
No need to shovel off back-netting.

Direct Thin-Set Application.

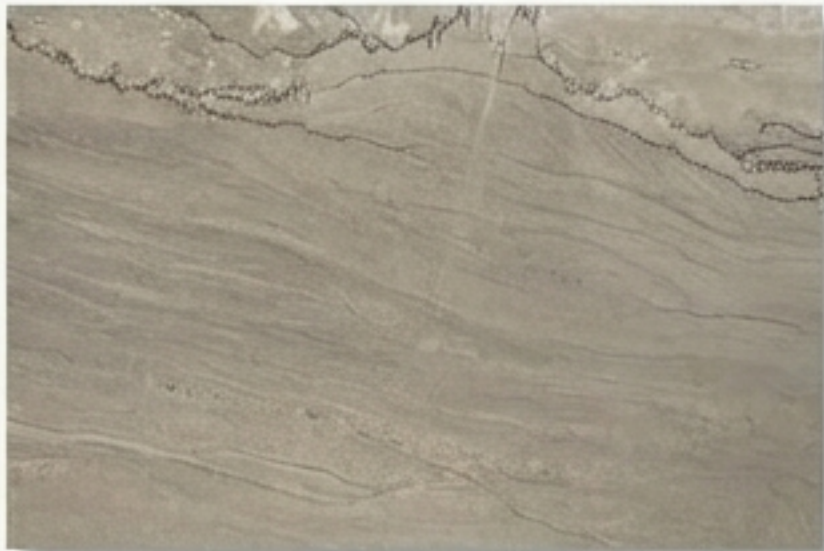
The Collection



Fish Belly White



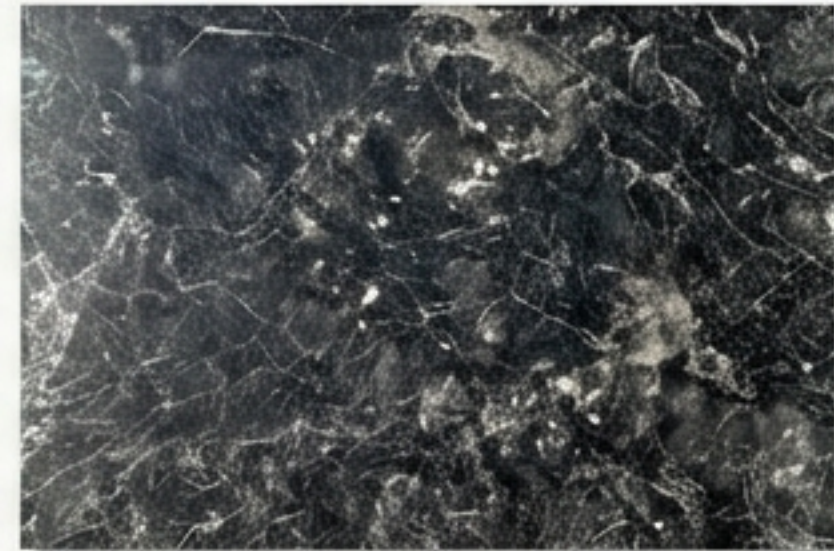
Landscape White



Hermes Grey



Cartier Grey



Black & Gold

Available in Polished, Honed, and Translucent finishes.

The 6 Dimensions of Value

