



EcoMarble: Stone, Evolved.

The Future of Ultra-Thin,
Composite Natural Stone.

Natural aesthetics. Industrial precision. Zero compromise.

The Weight of Tradition is Breaking the Industry.

The Old Way: High Risk, High Cost.



- Strict Silica Bans (2024)
- Heavy Lifting (50kg/m²)
- Expensive Logistics

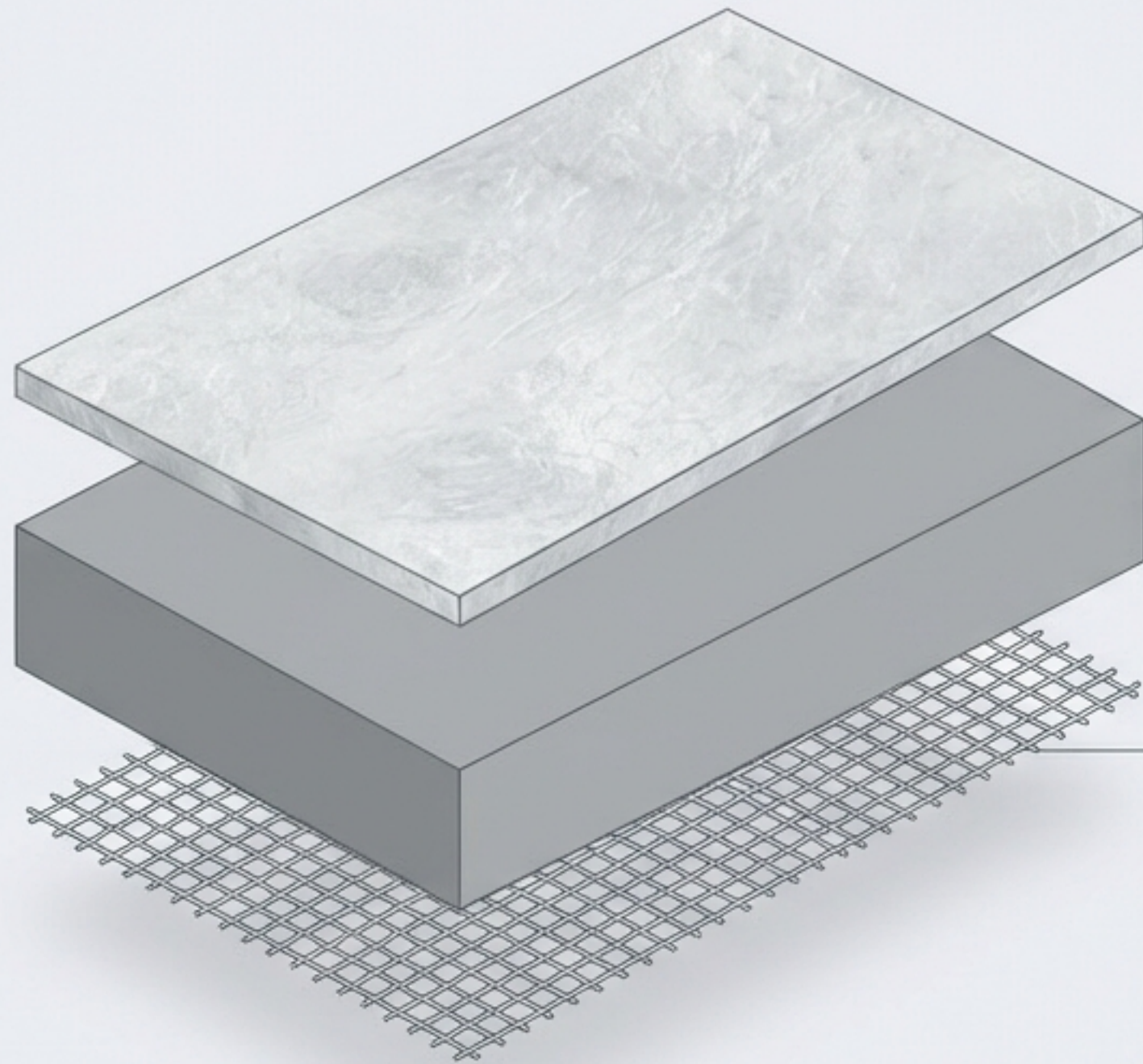
The Market Gap.



- Compliant Material
- OHS Safe (~16kg/m²)
- Efficient Freight

Data Reality: Traditional Stone = 50kg/m² vs. EcoMarble = ~16kg/m²

Natural Stone, Re-Engineered.



5mm Natural Marble Face (Low Silica)

High-Performance Inorganic Polymer (Resin-Free)

High-Strength Fiber Mesh

Powered by Automated Wire Saw Technology

- Precision: 0.5mm kerf (vs 3mm traditional)
- Yield: +30% raw material utilization
- Performance: >20J Impact Resistance

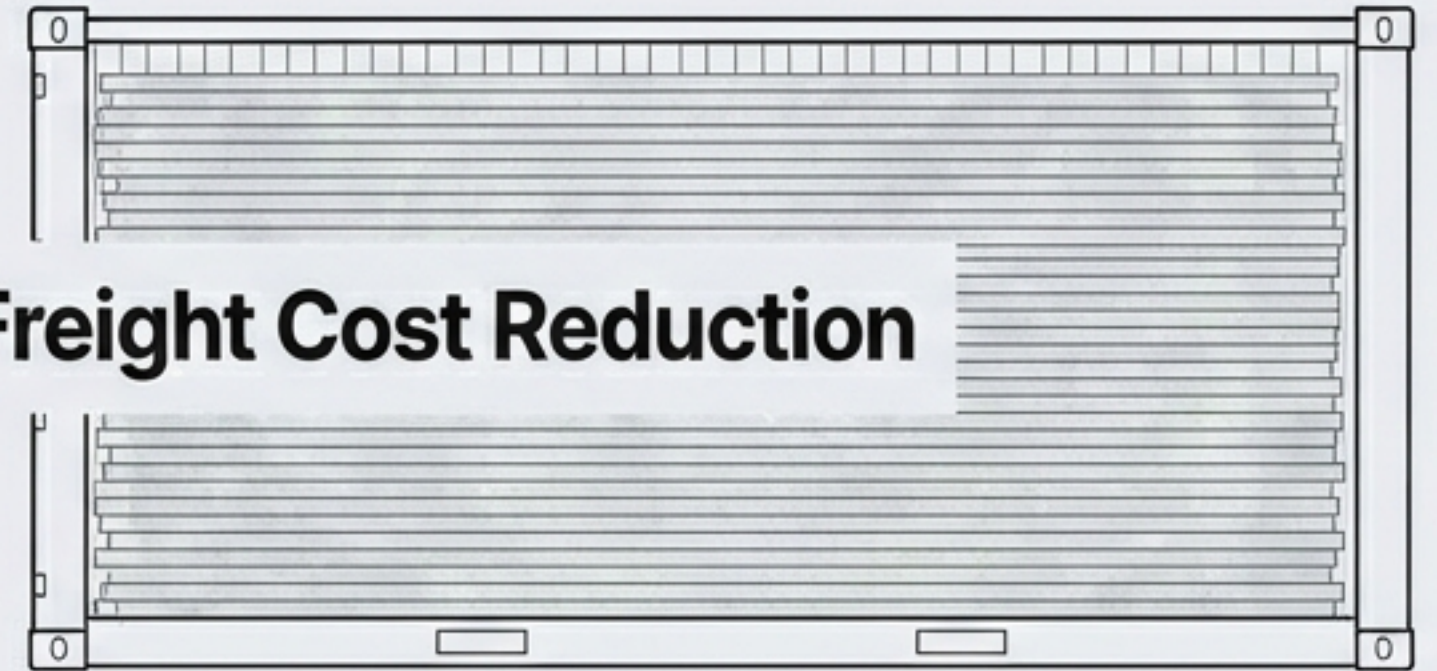
The Math of Lightness: A Logistics Revolution.

Transforming stone from a heavy freight burden into a high-efficiency light cargo model.

Traditional 18mm Stone



EcoMarble 5-7mm



2.5x Shipping Efficiency | 60% Freight Cost Reduction

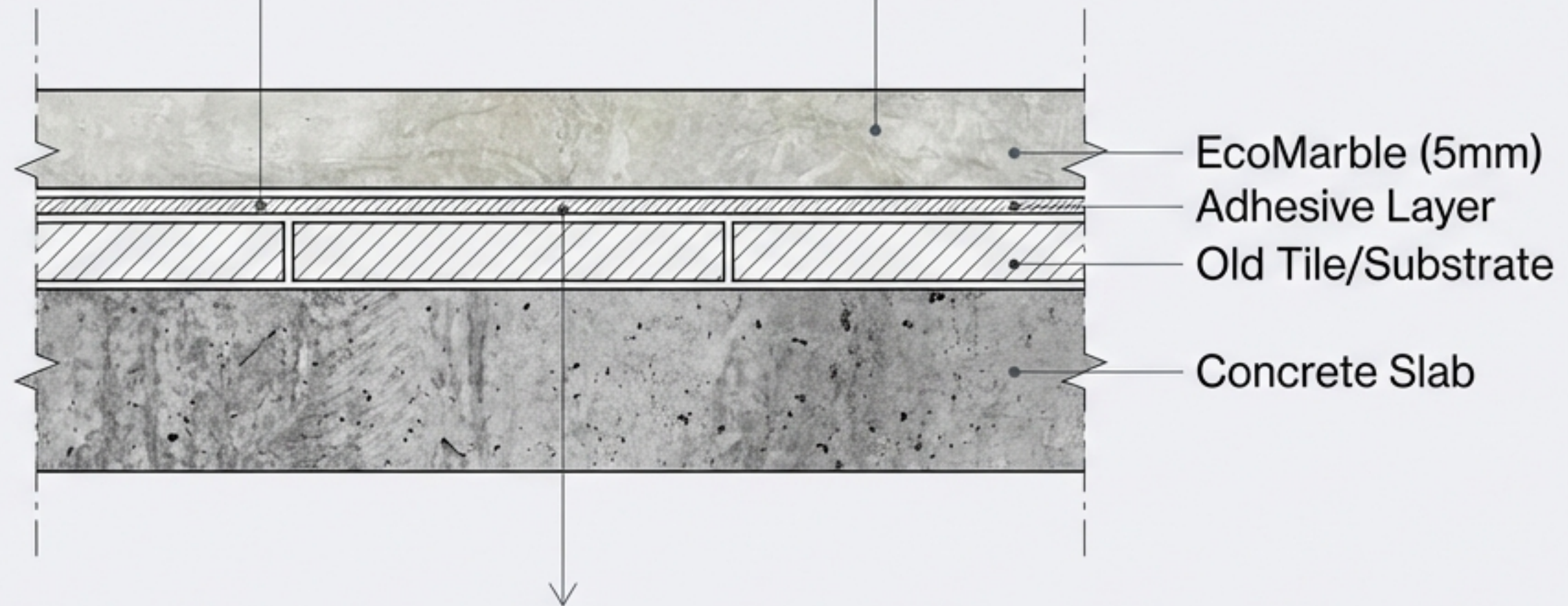
Traditional 18mm Stone
Max Capacity: ~400m² (Weight Limited)

EcoMarble 5-7mm
Max Capacity: 1000-1200m²

Silent Speed: The 'Zero Demolition' Renovation

No Demolition Required:
Direct thin-paste application.

No Noise / No Debris:
Ideal for operating hotels.



Speed: Reduces total renovation time by 30%.

“Achieves the comprehensive effect of luxury stone with the installation ease of a tile.”

Impervious Beauty: Solving Stone Pathology.

Traditional Stone: Porous, prone to alkali & rust.



The Problem: Stone 'breathes' in moisture and alkali from cement, causing white frost and rust.

EcoMarble: Hermetically sealed.



The Fix: Inorganic Polymer Backing creates a physical barrier, blocking water vapor and alkali transmission forever.

The Economics of Installation.

Total Installed Cost (AUD/m²)



The Hidden Savings:

- 1. No Steel Keel:** Direct adhesion eliminates structural steel costs.
- 2. OHS Compliant:** Single-person carry (16kg) reduces crew size.
- 3. Speed:** 2x faster installation rate.

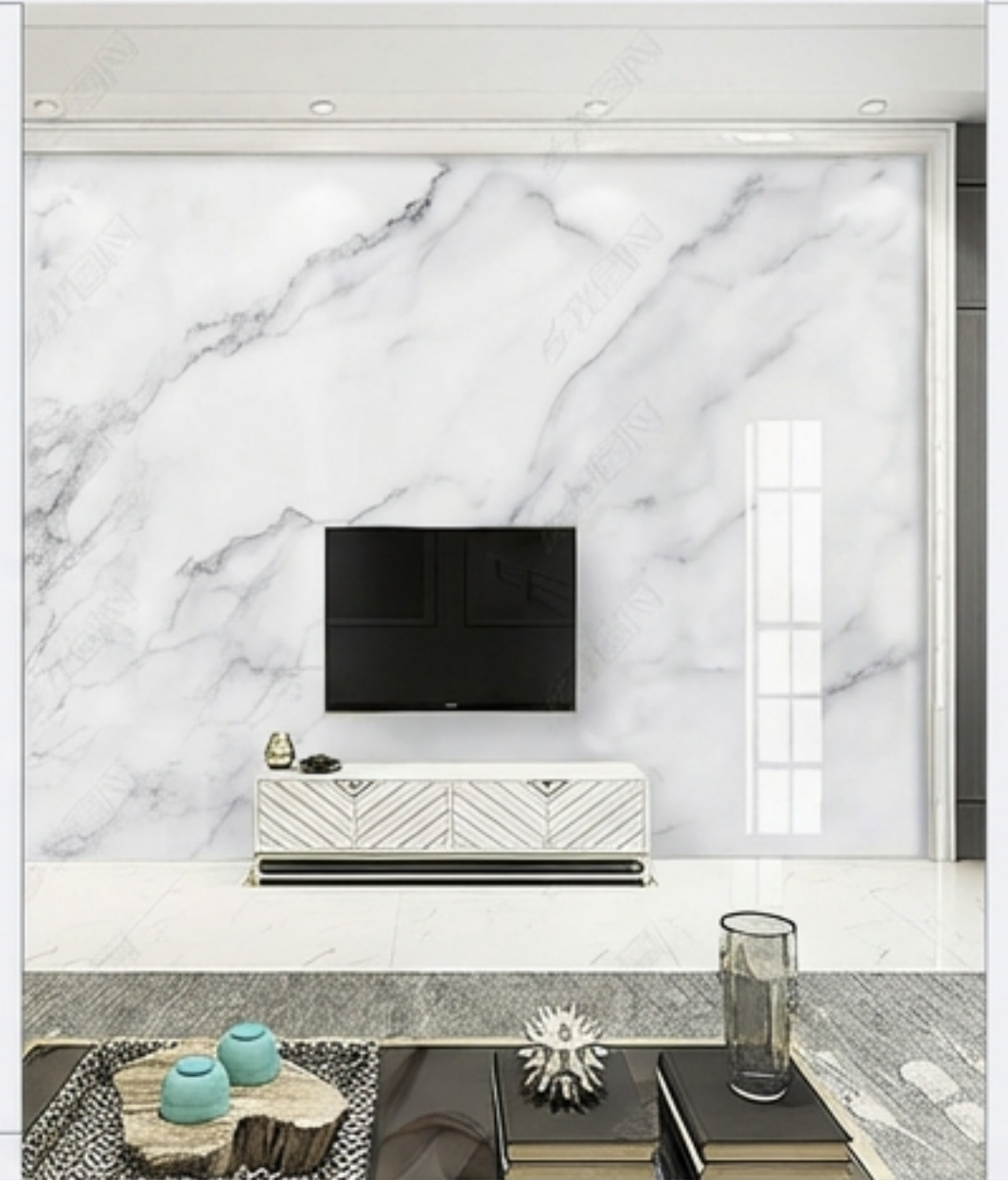
Defying Gravity: 1.5mm 'Stone Skin' Applications.



The 1.5mm Specification

Ultra-thin hairlines collage:

- Structure: 1mm Natural Stone + 0.5mm Backing
- Weight: Ultra-lightweight veneer
- Applications: Ceiling veneers, cabinetry faces, curved surfaces, backlit features.
- Concept: Stone that behaves like a wood veneer.



Technical Guide: Wet Area Specification.

Critical Constraints for Bathrooms & Wet Zones



DO Use 7mm or 9mm specifications.



DO Use professional waterproofing & sealing on joints.



DON'T Use 1.5mm ultra-thin sheets in wet zones.

Approved Varieties List:

Jazz White, Landscape White.

Cautionary Note:

Beige varieties (e.g., Moon Beige) are recommended for Dry Areas only.

Commercial Facades & Fire Safety.

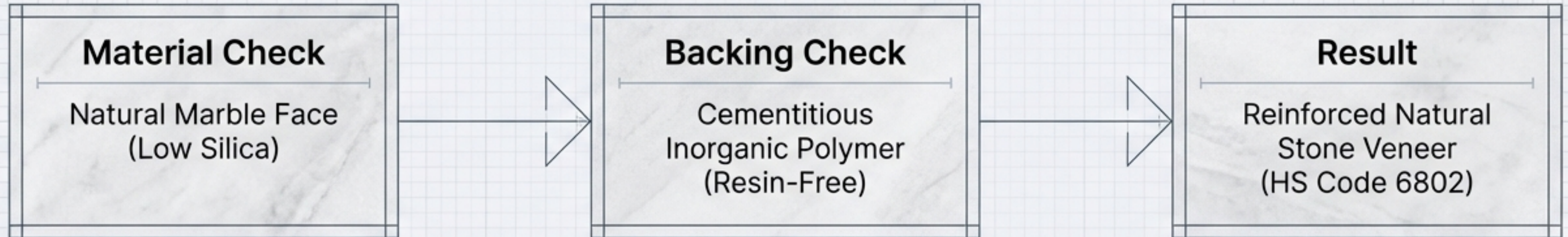


A lightweight, safe alternative to Aluminium Composite Panels (ACP).

- Inorganic Backing: Cement-based composition (Resin-Free).
- Safety: Non-combustible, unlike polyethylene-core ACPs.
- Durability: Weather-resistant, Impact strength >20J, Freeze-thaw immune.

Navigating the Australian Silica Ban

The Safe Harbor Strategy

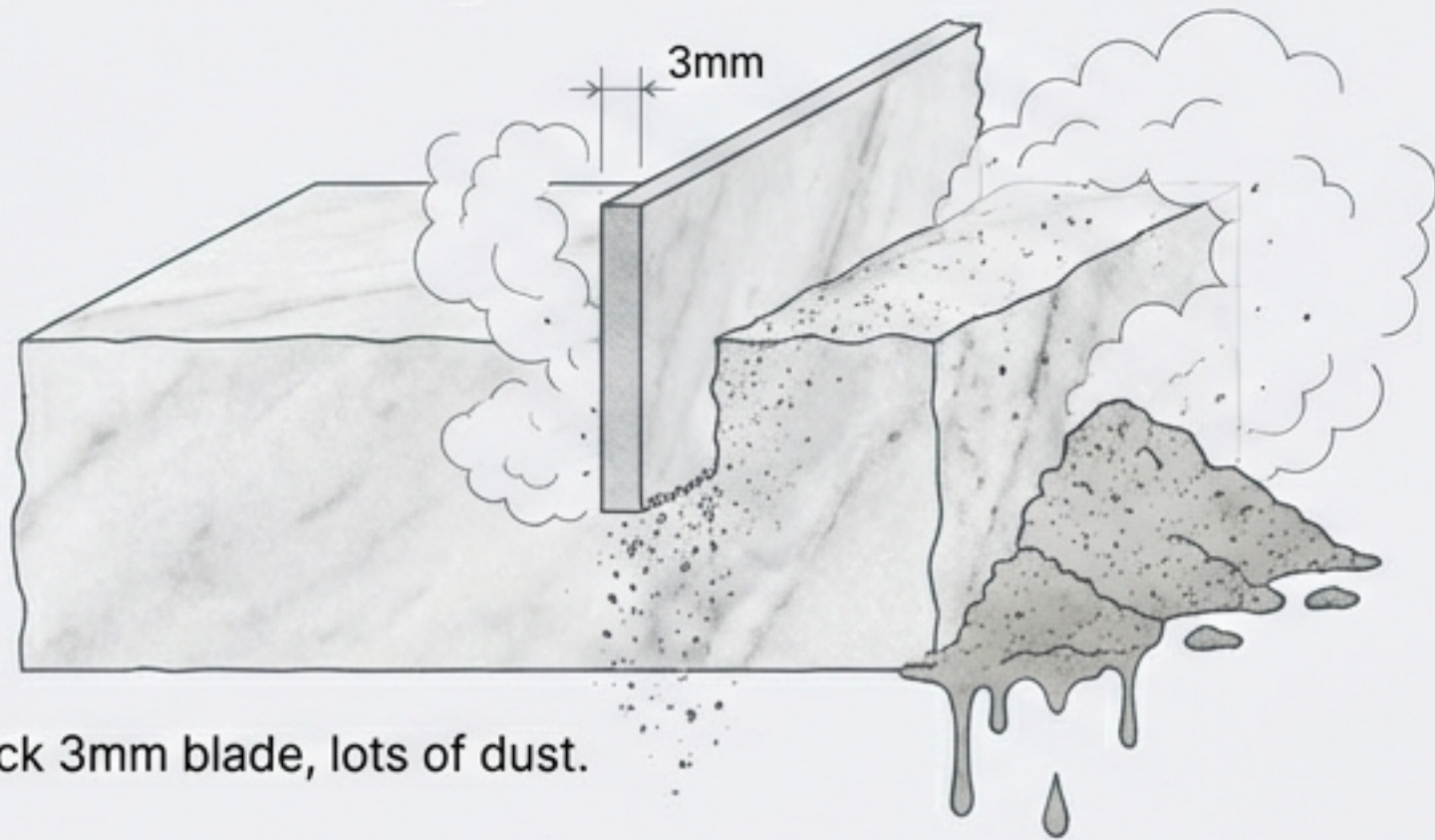


Compliance Advantage:

Defined as 'Composite Natural Stone', not 'Engineered Stone' (HS 6810). Backed by NATA Accredited Laboratory certification confirming <1% crystalline silica in the composite matrix. Inter, Charcoal.

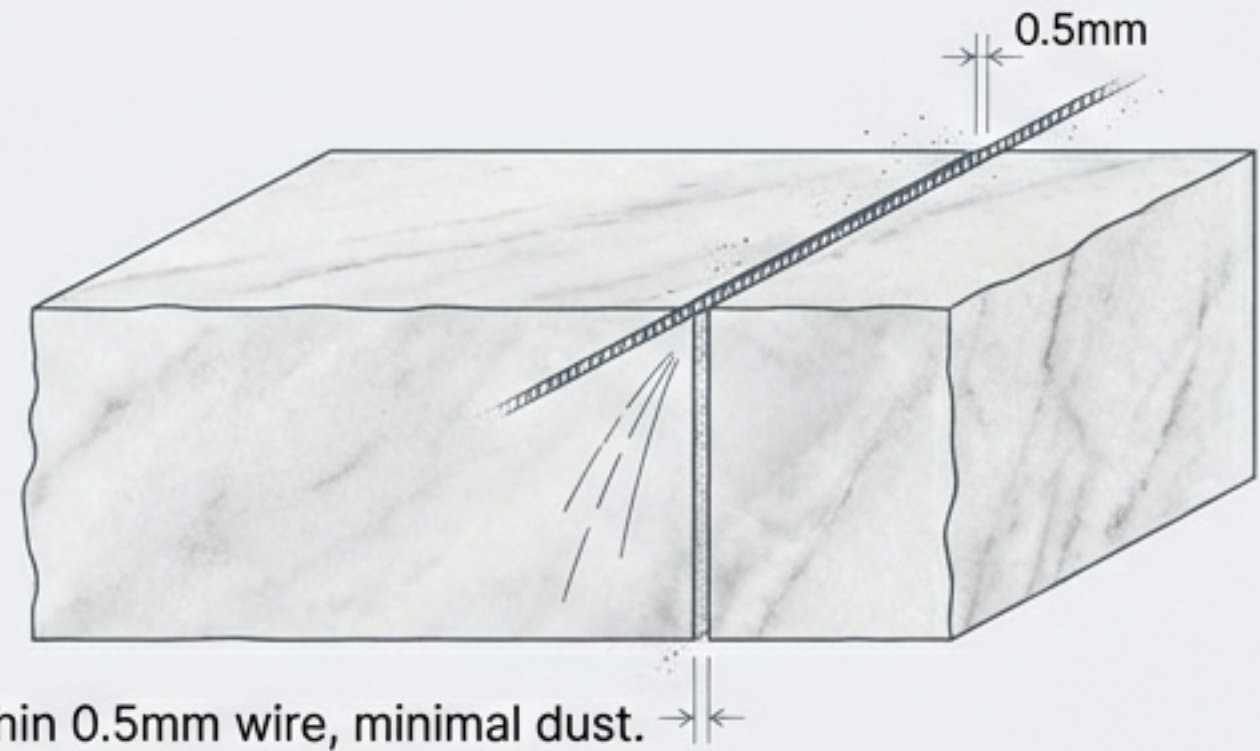
Sustainable Manufacturing: Do More With Less.

Traditional Gang Saw



Thick 3mm blade, lots of dust.

Wire Saw Technology



Thin 0.5mm wire, minimal dust.



**+30%
Yield**

More product from
same raw block



**-80%
Energy**

Manufacturing
consumption
vs traditional



**-95%
Waste**

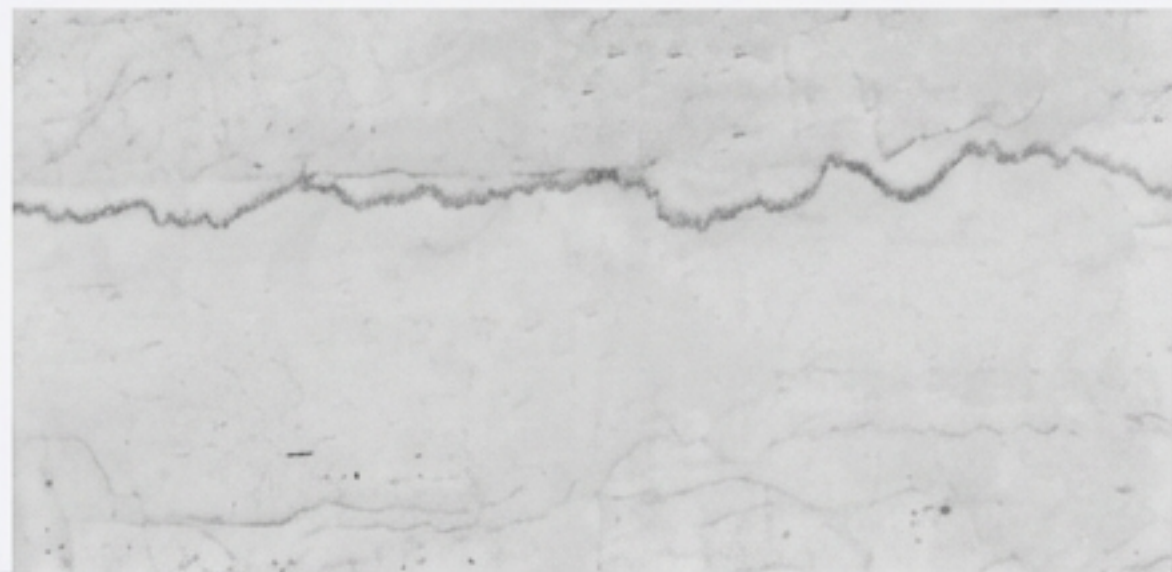
Near-zero sludge
and emissions



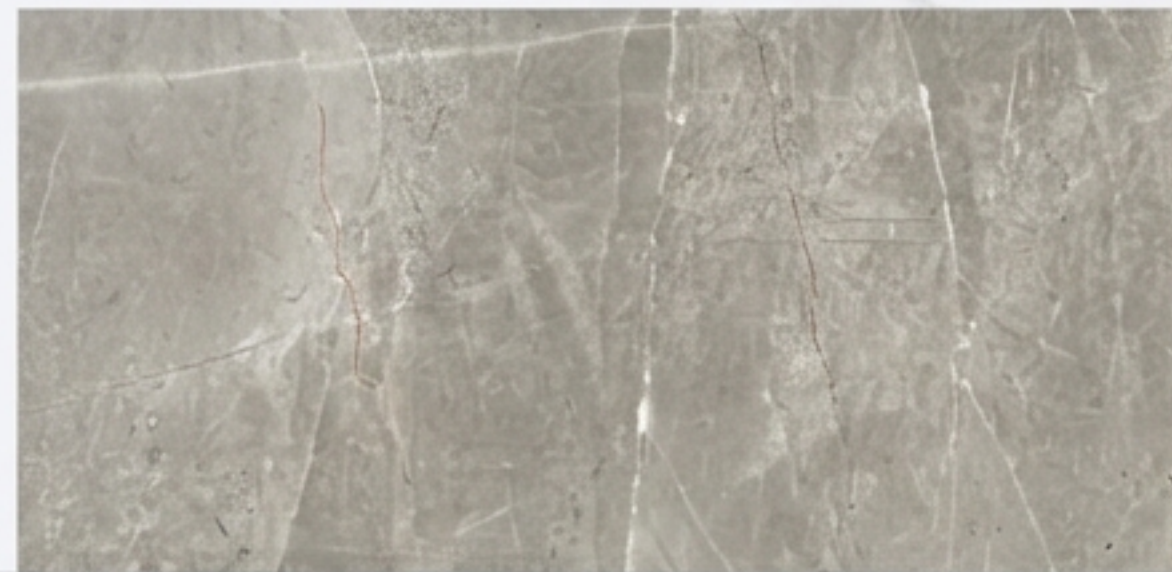
**Zero
Construction
Waste**

Overlay method
prevents landfill

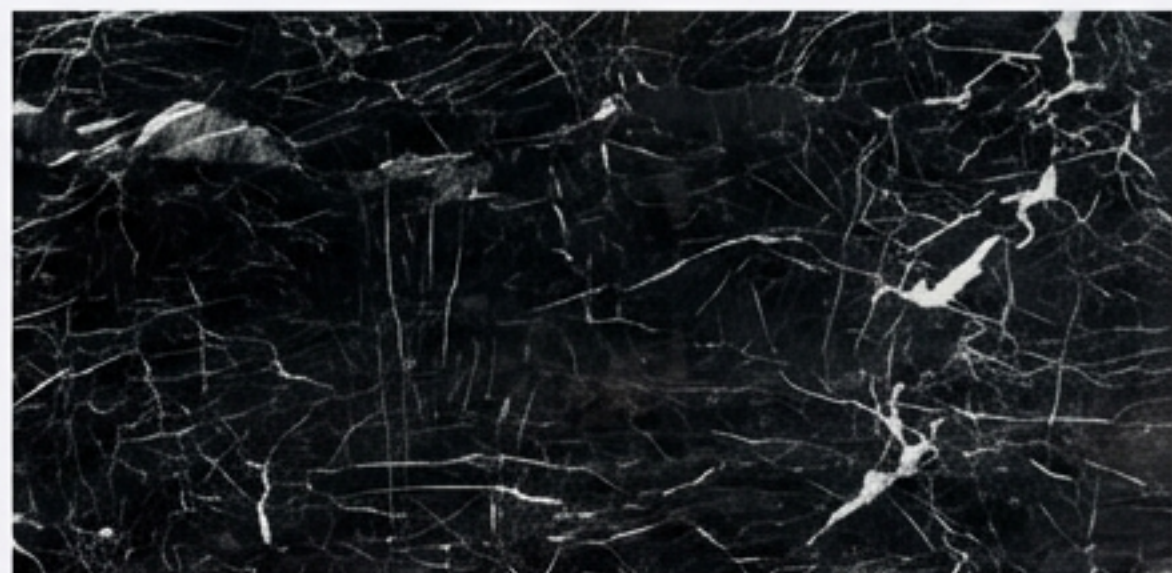
Nature's Palette: The Collection.



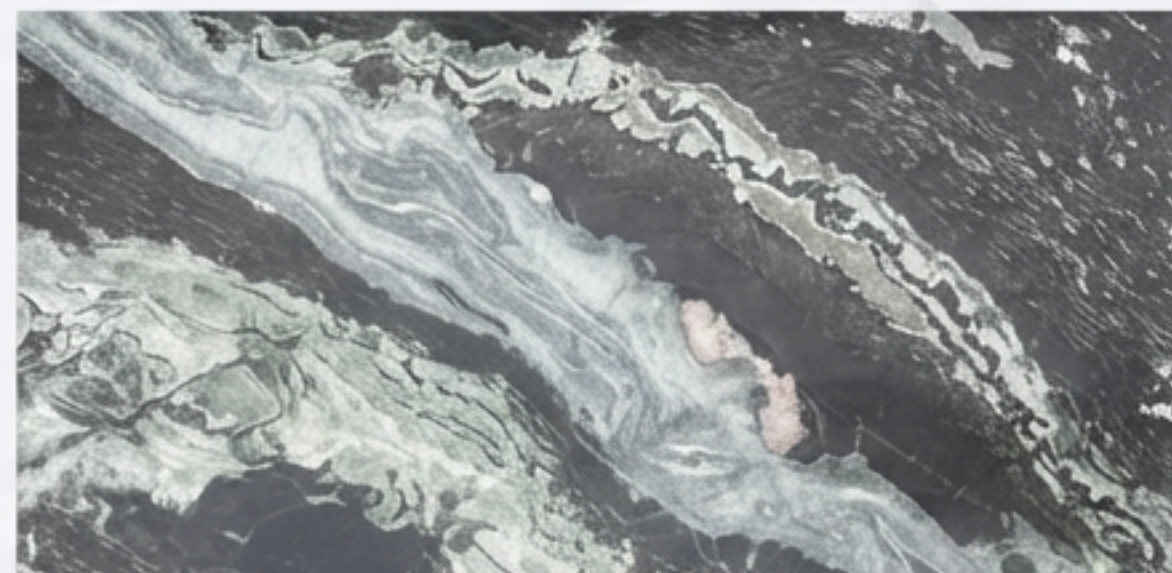
Classic White
in Charcoal Inter



Modern Grey
in Charcoal Inter



Statement Black
in Charcoal Inter



Exotic Color
in Charcoal Inter

From the translucency of Sky Realm to the gravity of Hermès Grey. Available in polished and honed finishes.

The EcoMarble Advantage.



Lightweight: 16kg/m² (Logistics & OHS friendly).



Durable: >20J Impact Strength, No Efflorescence.



Fast: Zero Demolition, 30% faster installation.



Versatile: From Facades (9mm) to Furniture (1.5mm).



Cost-Effective: Up to 50% savings on Total Installed Cost.



Partner with the Future of Stone.

Technical Manuals, NATA Certifications, and Sample Kits available upon request.

EcoMarble: Stone, Unburdened.